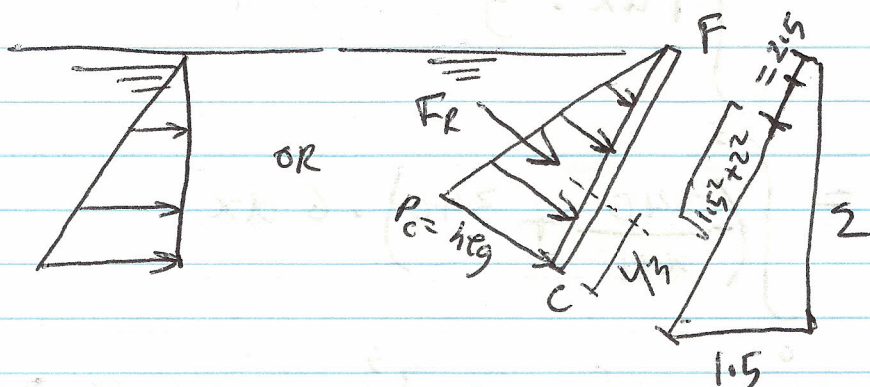


9-107

9-107

Plate CDEF

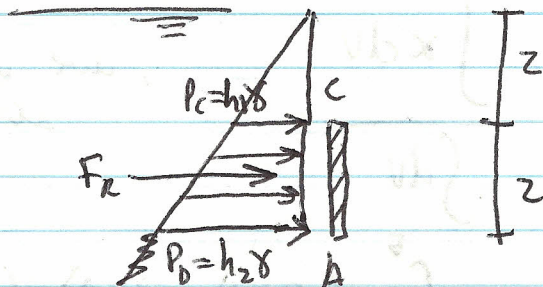


$$P_c = h \rho g \text{ or } h \gamma$$

$$= 2(60) = 120 \text{ lb/ft}^2$$

$$F_R = \frac{1}{2} (120)(2.5)(5) = 750 \text{ lb}$$

Plate ABDC



$$P_c = 2(60) = 120 \text{ lb/ft}^2, P_b = 4(60) = 240 \text{ lb/ft}^2$$

$$F_R = \frac{1}{2} (120 + 240)(4)(5) = 1800 \text{ lb}$$